



Every

**Dermatology
Capabilities**

Overview



Cliantha Research is a full-service Clinical Research Organization (CRO) offering end-to-end solutions in Early Phase (BA-BE & Phase I), Late Phase (II-IV), Respiratory, Dermatology, Consumer Clinical Research, IVRT, Biometrics, and more.

With a strong global presence in North America and India, Cliantha has 1500+ professionals across advanced clinical sites and bioanalytical labs. Strategic acquisitions of Hill Top Research, Inflamm Research, and Karmic Lifesciences have strengthened expertise in Dermatology, Respiratory, Data Management, and EEC Studies.

Successfully inspected by global regulators (USFDA, EU, MHRA Health Canada, DCGI, and more), Cliantha continues to deliver ethical, customer-centric research solutions. Headquartered in Ahmedabad, we operate across India, USA, and Canada.

Topical Products: Dosage Form Experience



**Transdermal Delivery System
(TDS Patch)**



Cream



Gel



Lotion



Ointment

TYPES OF STUDY

- Transdermal/Topical Bioequivalence
- Derma cosmetics and Nutraceuticals
- Vasoconstriction | HRIPT | PIPT
- Adhesion Studies
- Skin Care | Hair Care
- Efficacy End-point Studies
- In vivo SPF Testing

EXPERIENCE - INDIA

200+
Studies

6800+
Subjects

Regulatory Submission
USFDA, EMA, EU, MHRA, CDSCO

EXPERIENCE - North America

105+
Vasoconstriction
Studies

210+
Irritation/Sensitization
Studies

60+
Adhesion
Studies

295+
PK
Studies

10+
Efficacy Endpoint
Multicentre Studies



EXPERIENCE

Transdermal Delivery System (TDS Patch):

158+

Studies

5800+

Subjects

Regulatory Submission

USFDA, EMA, EU, MHRA

Buprenorphine, Clonidine, Diclofenac, Estradiol, Estradiol/Levonorgestrel, Estradiol/Norethindrone, Estradiol/Norelgestromin, Fentanyl, Granisetron, Lidocaine Wear Study, Nitroglycerin, Rivastigmine, Rotigotine, Scopolamine, Selegiline

Creams

10+

Studies

230+

Subjects

Regulatory Submission

USFDA, EMA, CDSCO

Doxepin Hydrochloride, Ivermectin, Lidocaine/Prilocaine, Spironolactone

Gel

15+

Studies

440+

Subjects

Regulatory Submission

USFDA, EMA, EU

Clindamycin + Anhydrous Benzoyl Peroxide, Dapsone, Diclofenac, Estradiol, Progesterone

Lotion

03+

Studies

35+

Subjects

Regulatory Submission

USFDA

Clobetasol

Ointment

03+

Studies

60+

Subjects

Regulatory Submission

USFDA

Crisaborole

EXPERIENCE - LATE PHASE

Phase
BE with PK endpoints,
Phase III

Regulatory
USFDA , EU, DCGI

28+
Studies

460+
Sites

12500+
Subjects

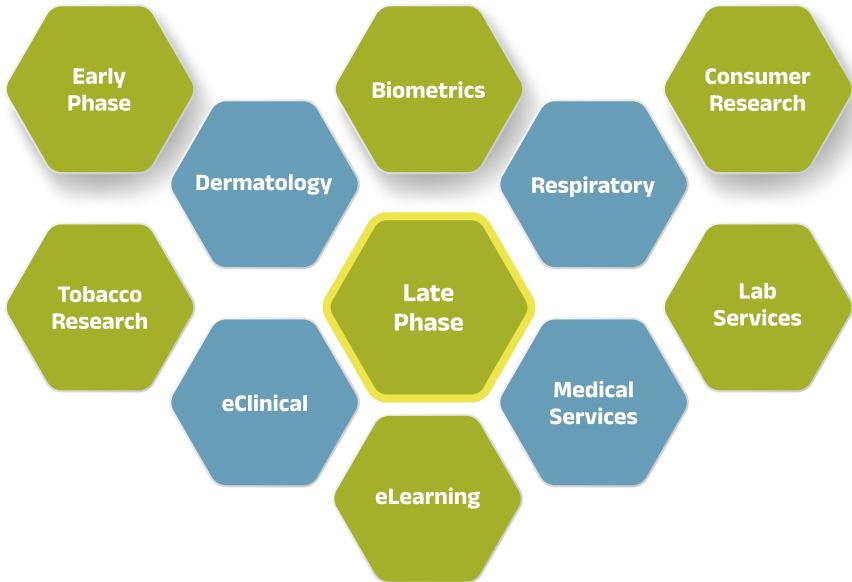
S.No.	Molecule	Indication	Regulatory	Sites	Patients
1.	Adapalene 0.1% Benzoyl Peroxide 2.5% Topical Gel	Acne Vulgaris	EU	20	550
2.	Adapalene 0.3% Benzoyl Peroxide 2.5% Topical Gel	Acne Vulgaris	USFDA	20	650
3.	AKP02G2 Spray (calcipotriol+ betamethasone dipropionate/ AKVANO)	Mild to Moderate Psoriasis	EMA	20	294
4.	Ammonium Lactate 12 % Cream	Ichthyosis Vulgaris	USFDA	20	390
5.	Ammonium Lactate 12 % Lotion	Ichthyosis Vulgaris	USFDA	20	390
6.	Clindamycin1.2% / Benzoyl Peroxide 5% Topical Gel	Acne Vulgaris	USFDA	26	850
7.	Clindamycin 1.2% / Benzoyl Peroxide 5% Topical Gel	Acne Vulgaris	EU	20	530
8.	Clindamycin1.2% / Benzoyl Peroxide 5% Topical Gel	Acne Vulgaris	USFDA	20	910
9.	Clindamycin 1.2% / Benzoyl Peroxide 5% Topical Gel (Pilot Study)	Acne Vulgaris	NA	10	60
10.	Dimethyl Fumarate 30 mg & 120 mg GR Capsule	Psoriasis	EU	20	300
11.	Fluocinolone Acetonide, hydroquinone, and Tretinoin (0.01%, 4%, 0.05%) Cream	Moderate to severe Melasma	USFDA	20	40
12.	Ivermectin 1% Cream	Rosacea	USFDA	15	525

EXPERIENCE Late Phase

S.No.	Molecule	Indication	Regulatory	Sites	Patients
13.	Ketoconazole 2% Cream	Tinea pedis	USFDA	20	40
14.	Ketoconazole 2% Shampoo	Tinea Versicolor	USFDA	14	425
15.	Ketoconazole 2% Shampoo	Tinea Versicolor	USFDA	15	425
16.	Mupirocin Calcium 2% Cream	Secondary Infected Traumatic Skin Lesions	USFDA	25	990
17.	Permethrine 5% Cream	Scabies	USFDA	10	154
18.	Permethrine 5% Cream	Scabies	USFDA	10	154
19.	Permethrine 5% Spray	Scabies	DCGI	2	18
20.	Pimecrolimus 0.8% Lotion	Moderate Atopic Dermatitis	DCGI	0	0
21.	Pimecrolimus 0.8% Lotion	Moderate Atopic Dermatitis	DCGI	6	52
22.	Roflumilast 0.30% Cream	Plaque Psoriasis	USFDA	8	615
23.	SCD-153 Topical Solution	Alopecia Areata	USFDA	1	10
24.	Tapinarof 1% Cream	Plaque Psoriasis	USFDA	22	450
25.	Tretinoin 0.025 % Cream	Acne Vulgaris	USFDA	20	715
26.	Tretinoin 0.025 % Cream	Acne Vulgaris	USFDA	20	1060
27.	Tretinoin 0.1 % Cream	Acne Vulgaris	USFDA	18	570
28.	Tretinoin 0.1 % Cream	Acne Vulgaris	USFDA	20	612



CENTER OF EXCELLENCE



WHY CLIANTHA?

Our Enshrined Values

Science & Integrity

Legacy of Excellence

Strategic acquisition of renowned North American Dermatology and Personal Care CRO HillTop Inc., operating since 1947.

Global Presence

INDIA
USA
CANADA

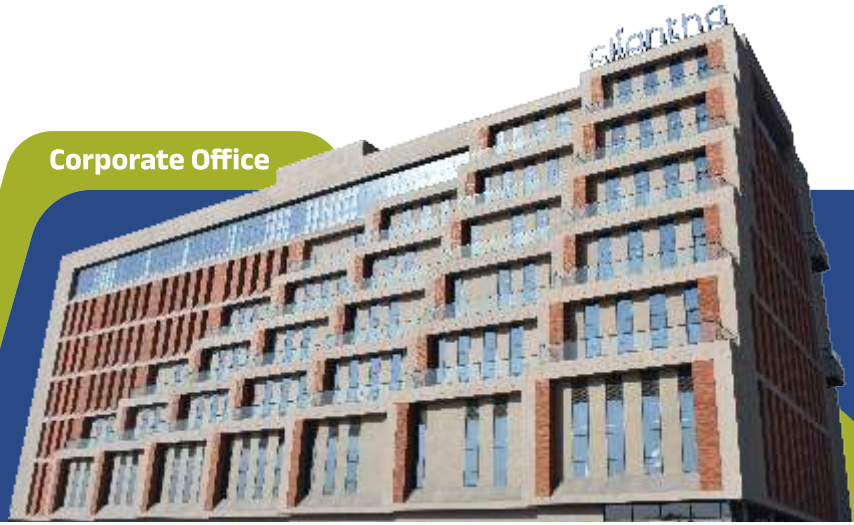
Quality Commitment

State-of-the-art infrastructure to ensure compliance with regulatory requirements.



cliantha[®]
research

Corporate Office



Cliantha Corporate
TP 86, FP 28/1,
Off S.P. Ring Road, Sarkhej,
Ahmedabad - 382210
Gujarat (India)

info@cliantha.com

+91 2717 698500

cliantha.com

